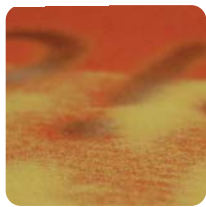
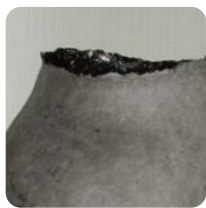
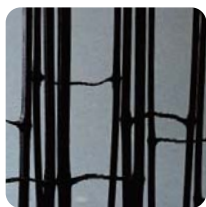


international travelling exhibition



**Hannover
Fair**

21-25 april 2008
Hall 5, Material
Trends

D-
compose!
by material sense



international travelling exhibition

Material Sense's latest international travelling exhibition D-Compose concentrates on the rediscovery of natural, authentic and original materials such as bamboo, ceramics, glass and paper. Treat yourself to a feast of sensations!

Dutch designers, researchers and industry are exploring new techniques and are eager to show the new forms they have found. 'D-Compose can stand for both 'Dutch compositions' and 'decomposition' as manifested by the new techniques used to turn familiar materials into surprising products.

While this Material Sense exhibition focuses on the results of materials research; the products, there will also be plenty of innovative materials for visitors to experience first hand.

Discover surprising bamboo constructions, new traditions in porcelain facing bricks and electrically lit, patterned wallpaper. See dandelion clocks interact subtly with lighting in the 'fragile future' installation.

Material Sense was invited to take part in the Hannover Fair by the International Forum Design (IF) in Hannover.

Participants: Thijs Bakker, Leonne Cuppen: Yksi ontwerpers, Ed van Engelen: Haans, Lonneke Gordijn, Marco Groenen, Annelies Hermsen, LAMA Concept, Mosa Ceramic Tiles, Moso Bamboo products, Jo Meesters, Elsbeth Joy Nielsen, Peli design, Tejo Remy & Rene Veenhuizen, TNO Industries, Jonas Samson, Sasja Scherjon, Greetje van Tiem, Stijn van Woerkom.

Material Sense is a platform organisation linking designers, researchers and entrepreneurs who are constantly searching for innovative materials to fuel their creativity. **Curious? Have a look on the website: www.materialsense.com**

D-Compose is powered by designstudio Loods 5, www.loods5.com